

# Whiteboards

HORIZONTAL SLIDING - DOUBLE TRACK SYSTEM



A versatile smooth sliding whiteboard solution using the world's highest quality writing surface

**BACH COMMERCIAL Pty Ltd**

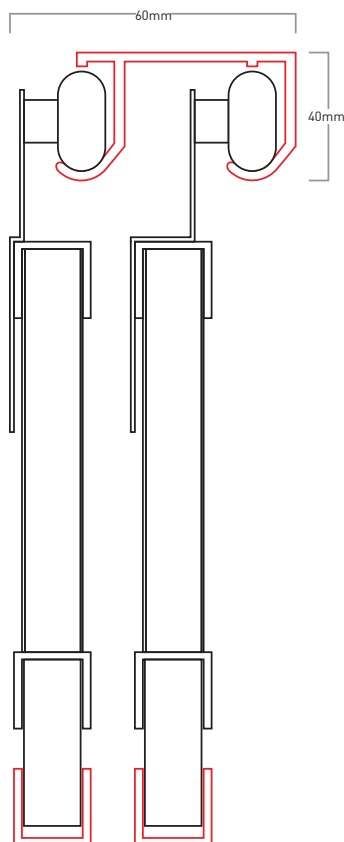
Factory 2 / 6 Clare Street, Bayswater VIC 3153

Ph: (03) 9729 7859 Fax: (03) 9011 1604

Email: [admin@bach.com.au](mailto:admin@bach.com.au)

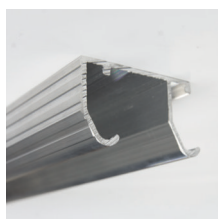
**BACH**  
[WWW.BACH.COM.AU](http://WWW.BACH.COM.AU)

## Product Specification

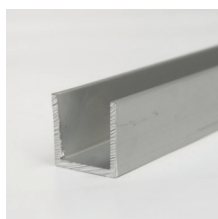


<b>Type of track:</b>	Aluminium Double Track (Standard Mill finish) - Capable of supporting multiple panels - Load rating of up to 50kg per panel
<b>Maximum width of track:</b>	4500mm
<b>Mounting options:</b>	Top mount (ideal with cabinetry & finished with pelmet) <i>Note: Allow minimum of 10mm clearance between wall &amp; unit.</i>
<b>End caps:</b>	Not available
<b>Writing surface:</b>	Fabricated and installed using e3 Ceramic Steel. One of the most durable and widely used writing surfaces available globally.
<b>Whiteboard frame type:</b>	C16 Channel - Clear anodised aluminium
<b>Wheel assembly:</b>	- Quiet and smooth nylon wheels with lubricated ball bearings - Zinc plated steel brackets - Height adjustment slot for accurate alignment 2mm offset & 12.5mm offset
<b>Bottom track:</b>	Aluminium C16 channel with nylon guides

## Components:



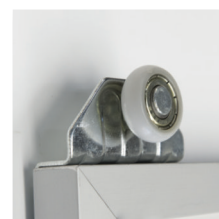
Double Track



Aluminium Guide Channel



Wheel assembly 2mm offset



Wheel assembly 12.5mm offset

## Surface Properties:



Chemical Resistant



Scratch Resistant



Bacteria Resistant



Fire Resistant



Graffiti Resistant



Stain Resistant

